



Because life depends on us™



M. Dave Malenfant,
EVP, Industrial Liaison and Talent Development

October 15, 2019

BUILDING SUPPLY CHAIN EXCELLENCE END TO END



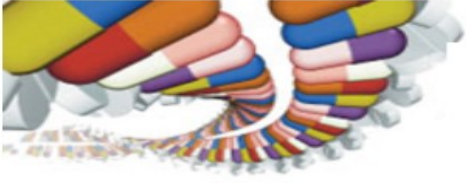
Because life depends on us™



Supply chain faces a severe shortage of talent at a time when the demands on the profession have never been greater.



BUILDING SUPPLY CHAIN EXCELLENCE END TO END



*“PREPARING THE BIOTECH SUPPLY
CHAIN FOR 2025, The Onward March”*



Because life depends on us™

The U.S. Bureau of Labor Statistics reports that jobs in logistics/supply chain jobs are estimated to grow by 26 percent between 2010 and 2020.

- Demand for supply chain professionals exceeds supply 9 to 1.
- Others put that number even higher.
- Life Science is no exception. In some cases, we are seeing 10 to 1.



“For every graduate with supply chain skills, there are six holes to be filled and it could be as high as 9 to 1 in the future,” - Jake Barr, CEO of Blue World Supply Chain Consulting.

BUILDING SUPPLY CHAIN EXCELLENCE END TO END



“PREPARING THE BIOTECH SUPPLY CHAIN FOR 2025, The Onward March”

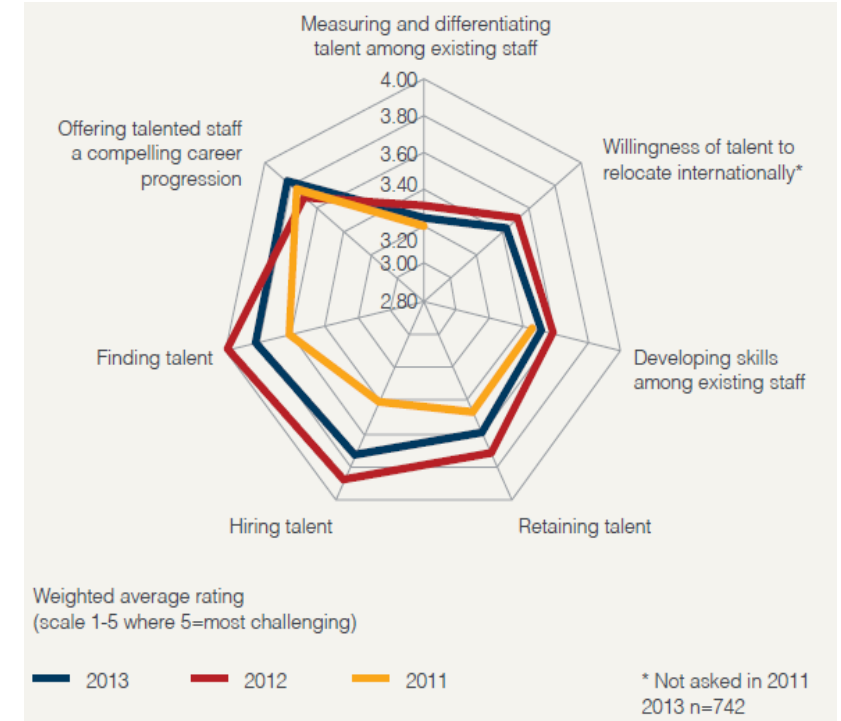


Because life depends on us™

- 25-30% of managers/execs at or beyond retirement age* (probably more!)
- 70% survey respondents say they are leaving positions unfilled due to lack of talent*
- 71% survey respondents rank executive level talent is extremely difficult to find.
- Leading SCM programs at universities have fewer students than jobs
- Effective Professional and Executive Supply Chain Education programs are lacking

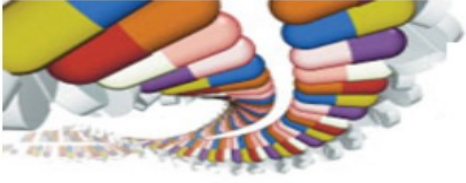
* Cindy Urbaytis – Institute for Supply Management

BUILDING SUPPLY CHAIN EXCELLENCE END TO END



SCM World CSCO Report, N=742





“PREPARING THE BIOTECH SUPPLY CHAIN FOR 2025, The Onward March”



Because life depends on us™

Food for Thought

71%

- Of organizations reported difficulty finding senior leaderships for their supply chain

9:1

- The ratio of demand for supply chain professionals to the supply of qualified individuals

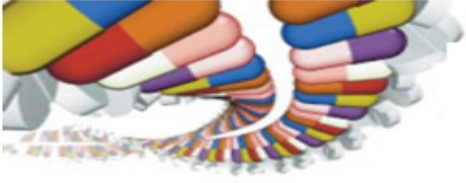
38%

- Of supply chain executives are confident in their organization's competency

76%

- Of companies have some kind of supply chain organization in place

BUILDING SUPPLY CHAIN EXCELLENCE END TO END



*“PREPARING THE BIOTECH SUPPLY
CHAIN FOR 2025, The Onward March”*



Because life depends on us™

The BIO Supply Chain Academy

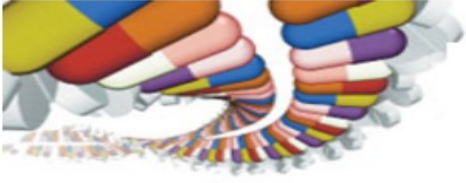
Bio Supply Chain Academy (BSCA), the founding nexus of the Bio Supply Management Alliance (BSMA), is dedicated to the education of innovative professionals who serve the needs of patients, point-of-care healthcare organizations and the Life Sciences industry as they are key partners toward the goal of developing novel therapies and diagnostics to save and heal lives.

We are Pleased to Launch continuing education for professional development

“Supply Chain Management for Life Sciences: Advance your career to the Top”

An Intense 3- day Program consisting of presentations, working sessions and Case Studies led by a distinguished faculty from industry and academia.

BUILDING SUPPLY CHAIN EXCELLENCE END TO END



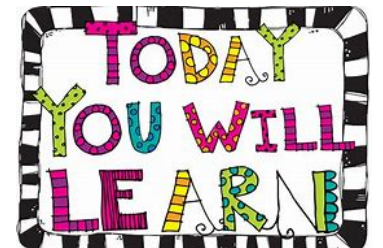
*“PREPARING THE BIOTECH SUPPLY
CHAIN FOR 2025, The Onward March”*



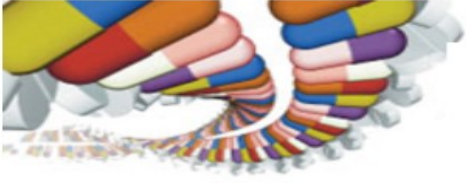
Because life depends on us™

You Will Learn

- The unique supply chain challenges and solutions of the Life Sciences industry consisting of Biotech, Pharmaceutical, Medical Devices and Diagnostics.
- New perspective of the business enterprise from Strategic Sourcing to Manufacturing to Transportation and Logistics to Patient Care.
- Innovations in the supply chain from Clinical Operations to Manufacturing to Delivery to Patient. – The Integrated Supply Chain
- Transformation of the industry through Digital Technologies
- How to assess your personal SWOTs and develop your personal career path.



BUILDING SUPPLY CHAIN EXCELLENCE END TO END



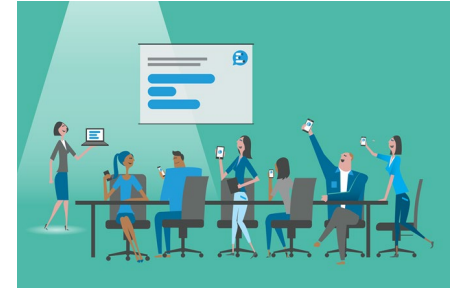
*“PREPARING THE BIOTECH SUPPLY
CHAIN FOR 2025, The Onward March”*



Because life depends on us™

Sessions Include

- Supply Chain Management of Biotech & Pharma
- Sales and Operations Management and Inventory Management
- Strategic Sourcing & Procurement
- Distribution & Transportation
- Strategies for Life Science Supply Chain
- CAPA | Root Cause Analysis and Recall Management
- Optimizing the Supply Chain Network
- Risk Management
- Disruptive Technology
- Career and Talent Development



BUILDING SUPPLY CHAIN EXCELLENCE END TO END



Because life depends on us™



Look for more information the
Inaugural Class scheduled for the
Spring of 2020

